

your  
**next** floor



### Slatted floor systems for farrowing

Balance Blue Deck	4
Balance Frame	5
Super Coated farrowing pen slat	6
Blue Deck farrowing pen slat	7
Lying areas for piglets	8
Tri-Bar farrowing pen slat	9
Tri-Bar and Tri-Cast sow inserts	10
Cool Sow System	11
Manure drain behind the sow	12

### Slatted floor systems for gestation sows

Tri-Bar for individual housing	13
Tri-Bar for individual or group housing	14
Tri-Cast for individual or group housing	15

### Slatted floor systems for weaning

Blue Deck	16
Tri-Bar	17
Super Coated	18
Tri-Cast	19

### Slatted floor systems for fatteners

Tri-Bar	20
Tri-Cast	21

Quality	22
---------	----







**A slatted floor system is not simply a floor for your pigs to stand and rest on. A good floor determines to a great extent the living conditions of your sows, piglets and fatteners. You want optimal well-being and good health for your animals, high labour efficiency and the best technical results. And all of that for an acceptable budget.**

**This is precisely why Nooyen Pig Flooring constantly focuses on the very best technology and the latest solutions. Progress is part of Nooyen's DNA. We are always looking for the 'next floor'. Geared to suit your wishes and needs. In other words: Come to Nooyen for 'your next floor'!**

#### From pig farmer to slatted floor producer...

Nooyen has been successfully creating its own distinct profile for decades. In 1978, six brothers, originally pig farmers, produced the first slats for their own use. Soon enough, their product appeared to be enormously popular with fellow pig farmers and they decided to take the path to the industrial world of slat production. Nooyen now has several production plants located

worldwide where steel, cast iron, Super Coated and solid plastic slatted floor systems for pigs are produced. In addition, the original pig farm branch still exists.

#### ...from idea to innovation...

In the course of the years, Nooyen has developed into a leading slat system producer through a number of innovations and product improvements. The ideas for new systems at Nooyen are born out of practical situations and are then expertly translated into innovative and solid products, which create absolute added value for the pig farming industry. Before being released on to the market, the new and improved Nooyen products are extensively tested at several test facilities across the world.

#### ...and from wish to end result!

Nooyen looks at its own products through the eyes of the agricultural entrepreneur enabling it to produce slats that meet the demands and requirements of you as a pig farmer. At Nooyen, you can choose V-shaped steel, coated slats, cast-iron, plastic or a combination of these materials based on your individual requirements. Nooyen offers a comprehensive range of innovative slatted floor systems.



# Balance Blue Deck

The plastic slatted floor system  
with moveable sow slat

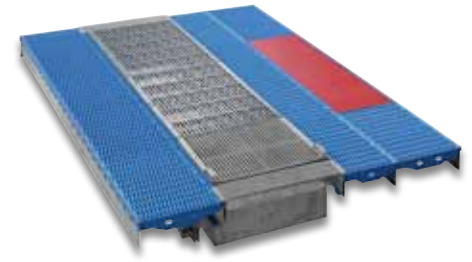


With the Balance Blue Deck, Nooyen offers a sophisticated system centring on the **reduction of piglet mortality caused by sows lying on piglets**. As soon as the sow lies down, she activates a switch that lowers the sow slat to the same level as the piglet slat. When the sow gets up again, the sow slat will rise to a safe height.

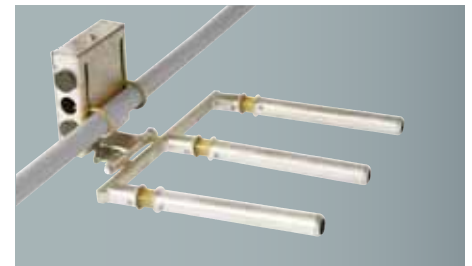
The piglet slats used in this model are the Blue Deck solid plastic slats. Thanks to the tear shaped bars and the rounded top, the Blue Deck slat for in the farrowing pen provides a comfortable surface for the pig to lie on, **perfect manure drainage** and is extremely **easy to clean**. The slat is different from other solid plastic slats: as the bars run parallel to the sow, they provide **maximum grip** to the piglets during suckling. The Balance Blue Deck is operated using a flexible side-mounted switch.

The Balance is **laboursaving** as the farrowing pens require less extensive monitoring. The Balance Blue Deck is **quick and easy to install**.

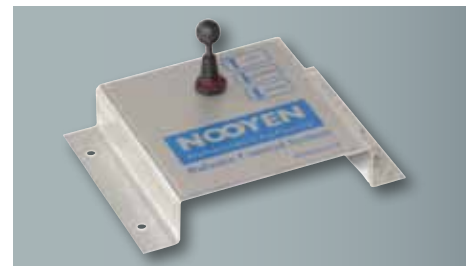
The sophisticated Balance system means that initial investment costs are higher than the costs for conventional flooring for farrowing pens. However, the Balance system will quickly earn back this extra expense. The earn-back time mainly depends on the reduction of piglet mortality.



- The Balance Blue Deck with the sow slat level with the piglet floor.



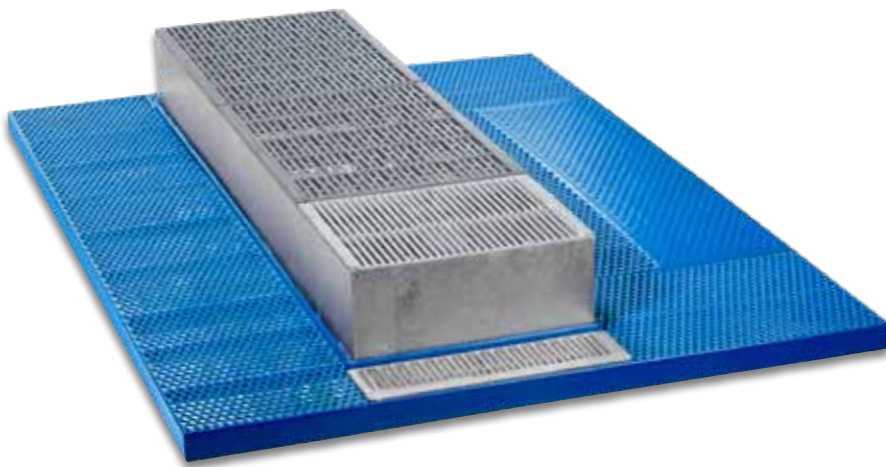
- Simple operation using a flexible side-mounted switch guarantees reliable results.



- Balance Control System (BCS): standard movement control using pneumatic operation.

# Balance Frame

The Super Coated slatted floor system  
with moveable sow slat



With the Balance Frame, Nooyen offers a sophisticated system centring on the **reduction of piglet mortality caused by sows lying on piglets** and the **flexible positioning of the sow**. As soon as the sow lies down, she activates a switch that lowers the sow slat to the same level as the piglet slat. When the sow gets up again, the sow slat will rise to a safe height.

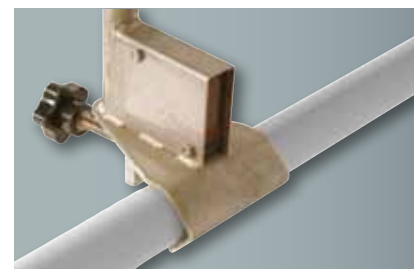
The moveable part for the sow is available in different versions. In addition to placing the farrowing crates in a straight position, they can also be placed in a diagonal position. The sow can also be placed out of the centre. In addition, the Super Coated Balance Frame offers extra flexibility in its dimensions.

The Balance Frame is operated using a flexible side-mounted switch. As an alternative to a side-mounted switch, an electronic switch is also an option.

The Balance is **laboursaving** as the farrowing pens require less extensive monitoring. The Balance Frame is **quick and easy to install**.



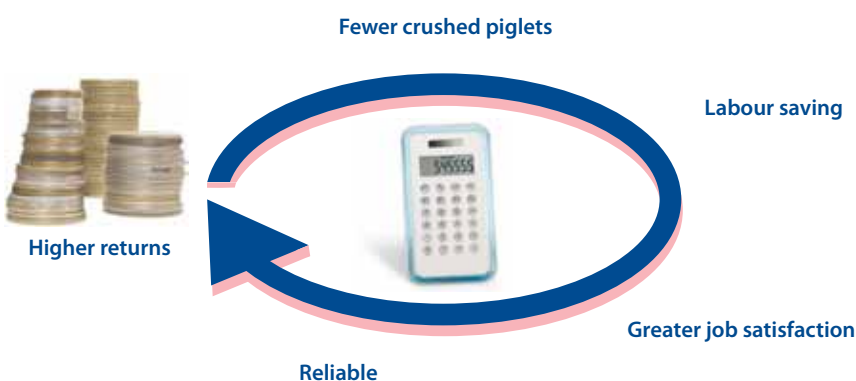
- A raised edge prevents injury to the piglets.



- Electronic switch (ELS): a sensor in a stainless steel housing detects whether the sow is standing or lying down.



- Balance Control System (BCS): standard movement control using electronic operation.

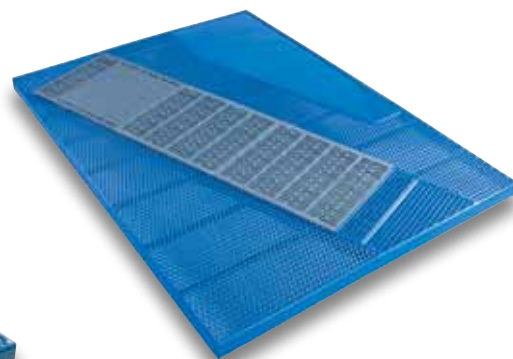
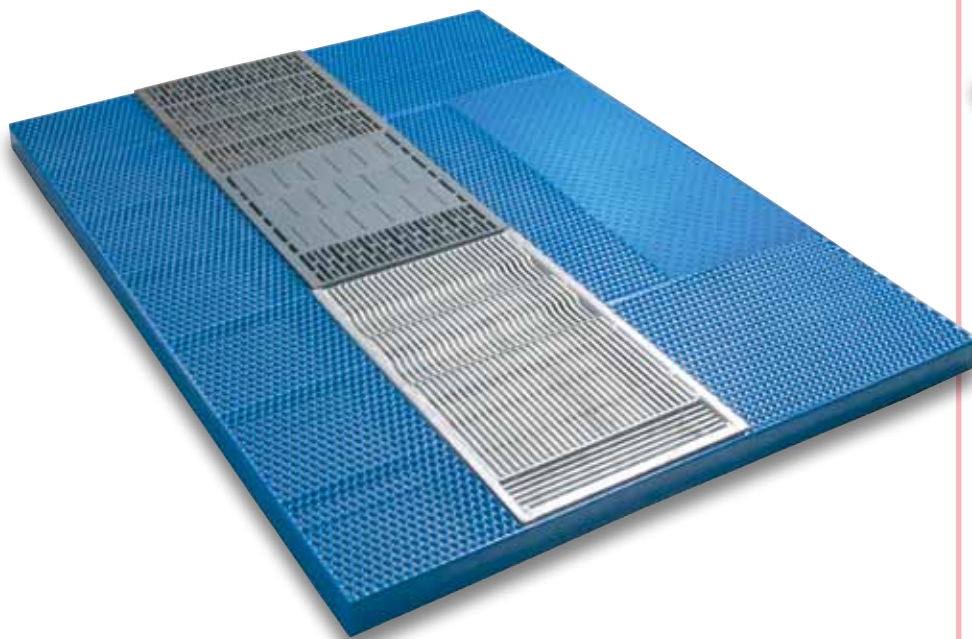


- Nooyen Balance: quick ROI through an increase of 6.5 piglets per farrowing pen per year.

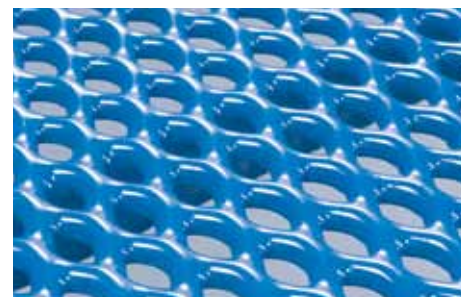


# Super Coated farrowing pen slat

The animal-friendly, coated slat  
for optimal comfort



■ Super Coated Frame model in a diagonal position.



■ Expanded metal.



■ Woven wire.

The Super Coated slatted floor is an **animal-friendly** floor system, made of expanded metal or woven wire equipped with a **qualitatively excellent coating**. This coating creates **optimal comfort** because it feels warm and soft.

The Super Coated slat is available in various standard sizes. Other sizes are available on request. The Super Coated slat for the farrowing pen is available as a self-supporting Frame model in a straight or diagonal position or Wing model.

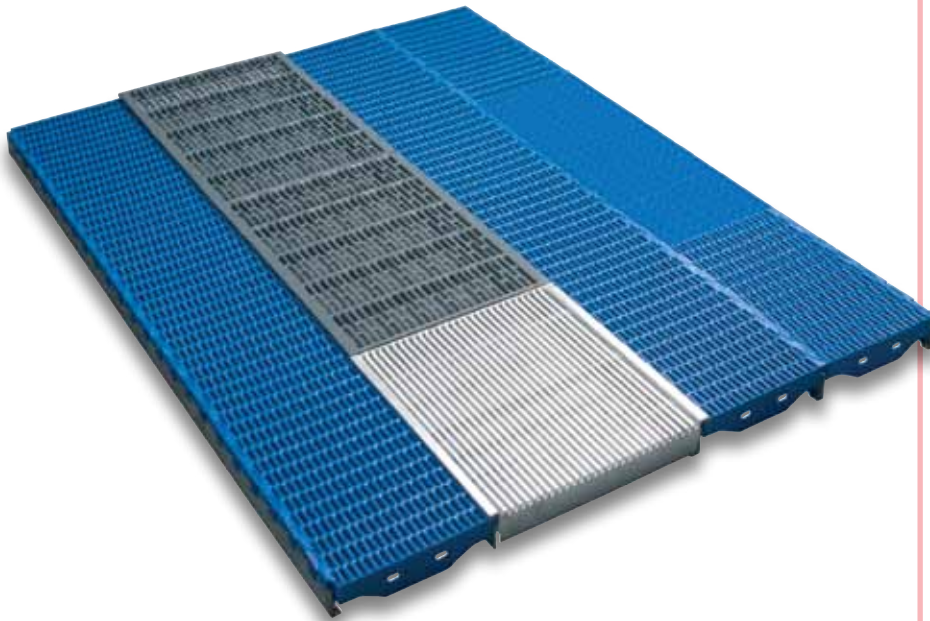
#### Additional option:

- The Super Coated slat can be equipped with lying areas on either side of the sow, made of Super Coated, aluminium, polymer concrete or a rubber panel with stud profile. All models are available with an integrated heating system.



# Blue Deck farrowing pen slat

## The unique solid plastic slat in Woven Wire model



The Blue Deck slat for the farrowing pen is a solid plastic slat, which, because of the tear shaped bars and the rounded top, provides **high lying comfort, perfect drain of manure** and an **easy to clean surface**. The slat is different from other solid plastic slats: as the bars run parallel to the sow, they provide **maximum grip** to the piglets during suckling.

The self-supporting Blue Deck slat is **easy to install**. Galvanised or glass fibre strips can be used for the support.

The slat has a standard length of 600 mm and is available in 200, 300 or 400 mm widths. The length of the individual components can be customised if required. In this way, practically all required sizes are possible.

All models of the Blue Deck slat have sufficient bearing capacity for the sow.

### Additional options:

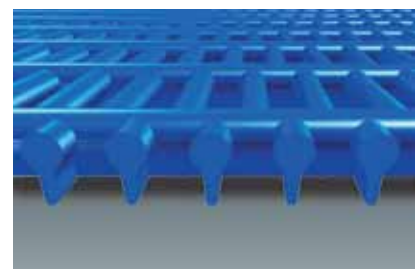
- The Blue Deck slat can also be fitted on one or both sides of the sow with an integrated lying area. Various removable heated elements are also available.
- The steel galvanised support strips can be equipped, for instance, with a wall plate, an angle iron or a round pin. This offers additional installation options.



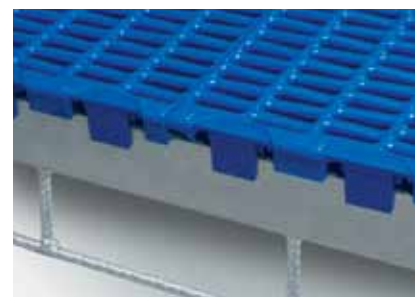
- The solid area of the Blue Deck has a tear shaped profile, giving the piglets optimal grip.



- The Blue Deck slat is equipped with bars running parallel to the sow providing extra grip for the piglets.



- The tear shaped bars and the rounded top provide high lying comfort, perfect drain of the manure and easy to clean surface.



- Blue Deck slat on galvanised steel frame with bridge construction.

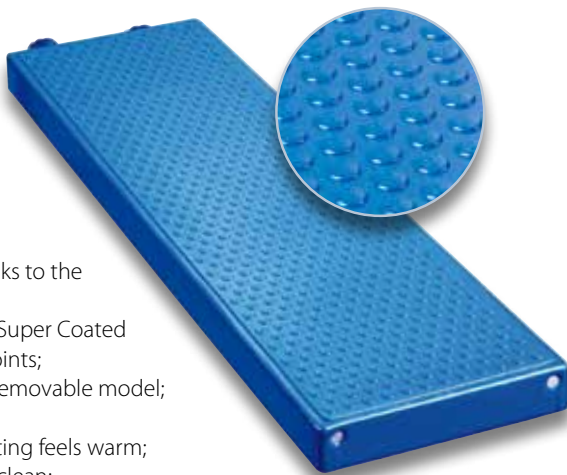
# Lying areas for piglets

## With integrated heating system

Nooyen offers a comprehensive range of lying areas for piglets in the farrowing pen. These lying areas can be equipped with an integrated heating system and are characterised by their optimal grip and comfort levels.

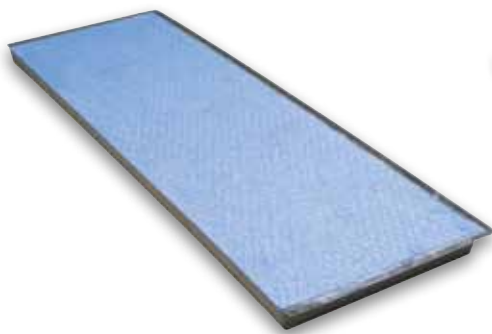
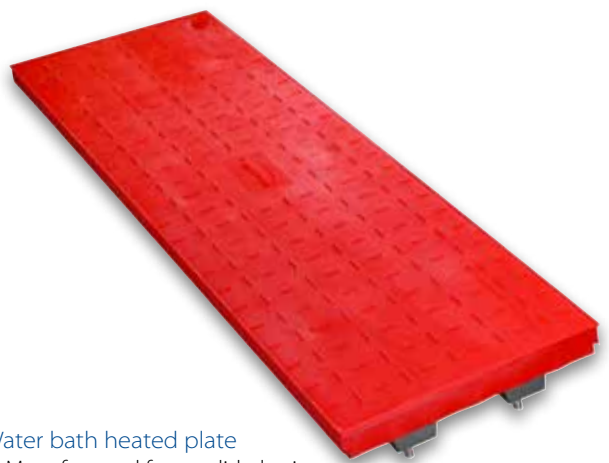
### Super Coated stud panel

- Optimal grip thanks to the stud profile;
- Integrated in the Super Coated slatted floor: no joints;
- Also available as removable model;
- Water heated;
- Comfortable: coating feels warm;
- Hygienic: easy to clean;
- Optional insulation.



### Water bath heated plate

- Manufactured from solid plastic;
- Profile gives good grip;
- Hygienic: easy to clean;
- Standard insulated.



### Polymer concrete solid area

- Standard insulated;
- Good grip;
- Long life span;
- Low entry temperature;
- High pipe density gives good distribution across the panel.



### Polymer concrete solid area with stainless steel top panel

- Standard insulated;
- Hygienic: easy to clean;
- Long life span;
- Low entry temperature;
- High pipe density gives good distribution across the panel.



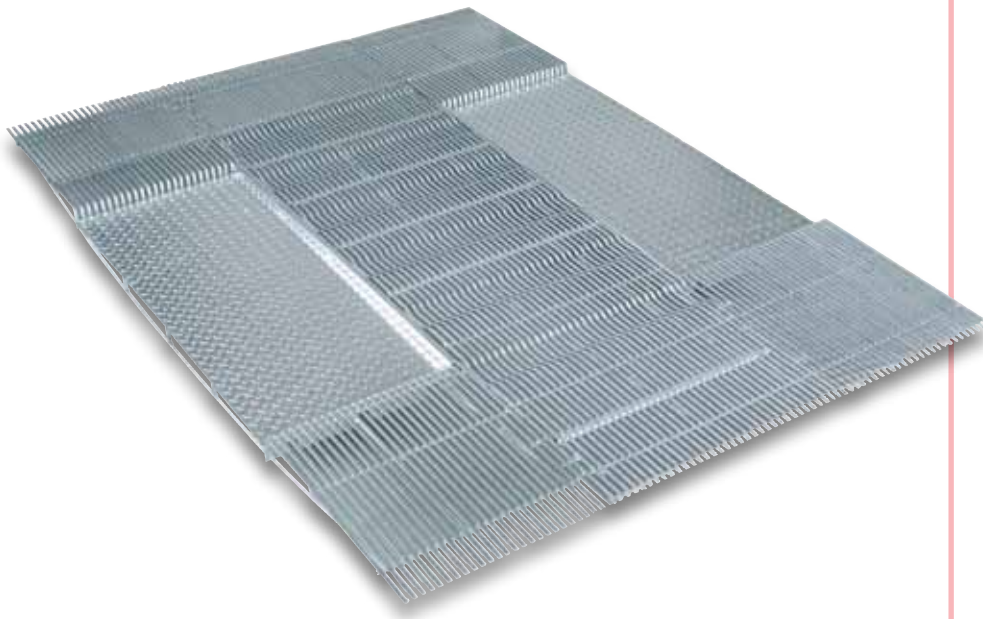
### Aluminium solid area

- Standard insulated;
- Good grip thanks to tear shaped profile;
- Low entry temperature;
- Aluminium pipe under the panel ensures maximum heat transfer;
- Excellent distribution of heat across the panel.



# Tri-Bar farrowing pen slat

## The V-shaped slat for perfect hygiene



- The Eco-Line is a Tri-Bar slatted floor for in the farrowing pen with heated lying areas on both sides of the sow.

The **V-shaped bars** of the Nooyen steel Tri-Bar slatted floors ensure a **perfect drain of manure** and, consequently, **excellent hygiene**. This gives the flooring system an ammonia reducing effect.

Because of their flat tops, Tri-Bar slats have an **optimal standing surface** and offer **outstanding lying comfort**.

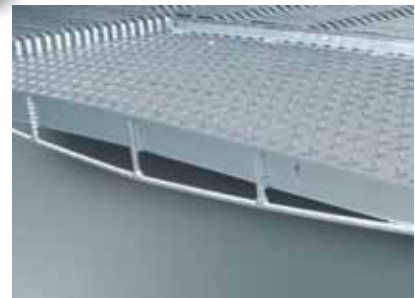
In addition to various standard sizes, the Tri-Bar is available in any customised size. The steel Tri-Bar slats for the piglet area in the farrowing pen is available with a 10 mm bar width. In combination with 8 or 10 mm slots.

### Additional options:

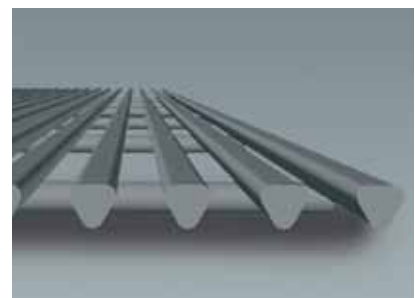
- Tri-Bar slats can be installed at any required height using strips welded against or under the Tri-Bar or angle irons.
- The Tri-Bar farrowing pen slatted floor can also be fitted on both sides of the sow with a steel lying area with integrated floor heating system. The Eco-Line has a steel solid area on both sides; the MVR on one side.
- Tri-Bar slats can also be combined as a half-slatted floor with a concrete area.



- Tri-Bar is available in a flat model or a model with extra profile: Softgrip.



- The lying areas in the Eco-Line have a tear shaped profile, providing optimal grip for the piglets.



- Optimal manure drainage and hygiene thanks to the V-shaped bars with rounded edges.



# Tri-Bar and Tri-Cast sow inserts

## Tri-Bar inserts for perfect hygiene

## Tri-Cast inserts for reliability and durability

In the farrowing pen, the sow can be positioned in a straight or in a diagonal position. The slatted floor under the sow can be provided level with the piglet slats or in an raised position. With raised sow slats, a lowered passage for the piglets is possible in the front and the back.

The inserts under the sow can be made of Tri-Bar or Tri-Cast. A combination of different inserts is also possible.

### Tri-Bar sow inserts

The **V-shaped bars** of the Nooyen steel Tri-Bar slatted floors ensure a **perfect drain of manure** and, consequently, **excellent hygiene**. Because of their flat tops, Tri-Bar slats have an **optimal standing surface** and offer **outstanding lying comfort**.

The Tri-Bar sow slats are available with 10 or 12 mm bar widths. In combination with a 10 mm slot. An alternative option is a steel round profile with 10 mm bar and slot widths.

#### Tri-Bar additional options:

- Equipped with shoulder plate for extra sow comfort.
- Equipped with a Hotpipe behind the sow, for a warm reception of newly-born piglets.
- Equipped with a manure opening or manure hatch that tilts upwards or downwards.

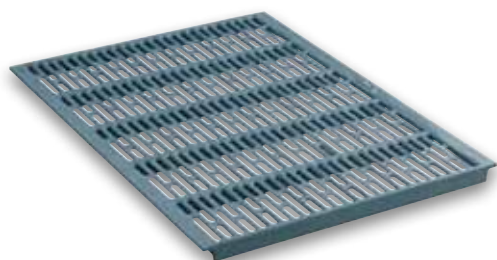
### Tri-Cast sow inserts

The Tri-Cast slatted floor is a reliable cast-iron floor system made of high-quality Australian cast-iron. The Tri-Cast slats are **strong, ductile** and, especially, **durable**, and have a **good drain of manure** thanks to the **V-shaped bar**.

The Tri-Cast insert under the sow is available in various standard sizes.

#### Tri-Cast additional option:

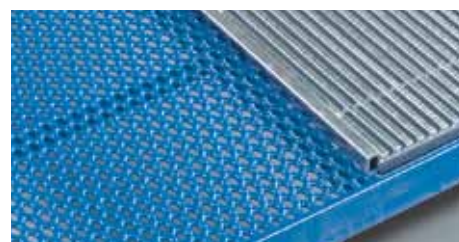
- Equipped with shoulder plate and/or cooling for extra sow comfort..



- Tri-Cast sow insert without shoulder plate.



- U-Noslip provides optimal grip for the sow.



- Raised sow slat.



- Level sow slat.



- A Hotpipe behind the sow creates an extra warm welcome for the newly born piglets.



- Tri-Cast: anti slip standing surface thanks to high-low profile.



# Cool Sow System

## Floor cooling with lactating sows



Creating a warm zone for piglets and a cool zone for the sow is essential for the performance in the farrowing pen. Precisely for this application, Nooyen has developed a sow slat with floor cooling: the Cool Sow System.

The Pig Innovation Centre (Varkens Innovatie Centrum) Sterksel has performed two years of research into the effects of floor cooling on lactating sows. The research shows that sows housed in a farrowing pen with floor cooling have a higher feed intake. This is expressed in lower weight loss by the sow and a higher weaning weight of the piglets. The financial advantage of the system has been calculated to be 60.00 euro per farrowing pen/year.

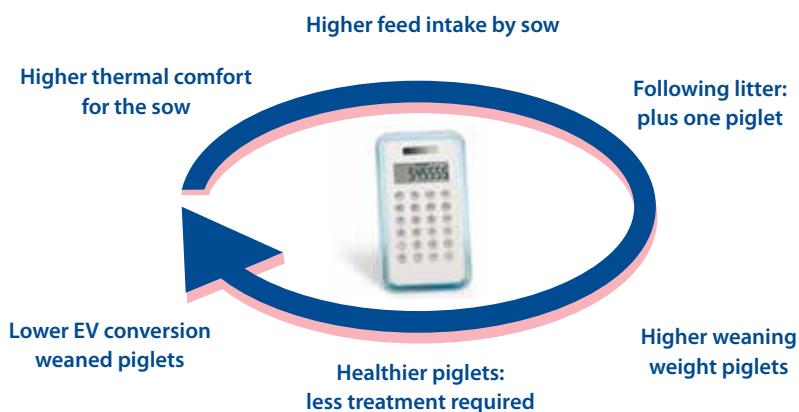
Floor cooling works most effectively when used with cast iron slats with a shoulder plate. The optimal temperature of the water used for cooling is 21 degrees Celsius.



■ Tri-Cast sow insert with the Cool Sow System.



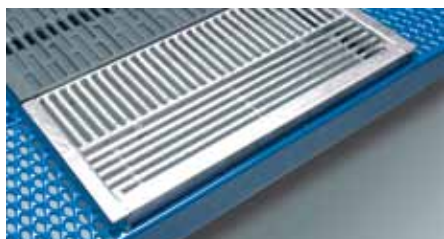
■ Cool water flows through a stainless steel tube underneath the slat.



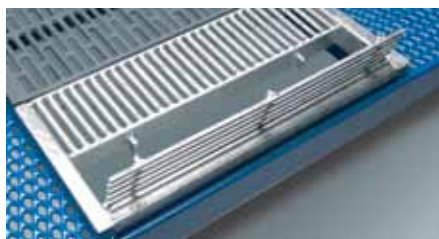
# Manure drain behind the sow

## For perfect hygiene in the farrowing pen

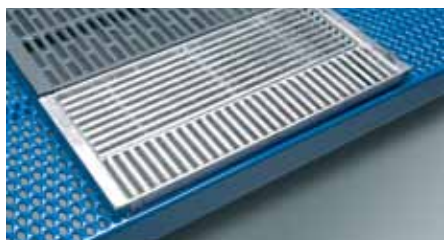
Nooyen offers many possibilities for manure drainage behind the sow in the farrowing crate. The use of a removable, tilting manure hatch or the choice of a manure opening ensure perfect hygiene in the farrowing crate.



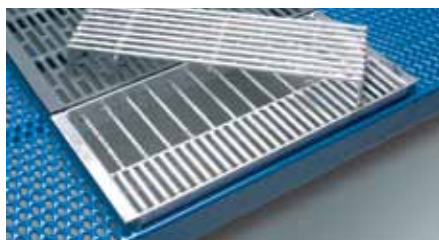
■ Tri-Bar tilting manure hatch.



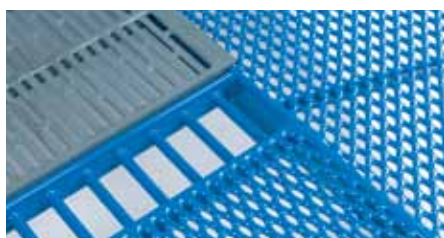
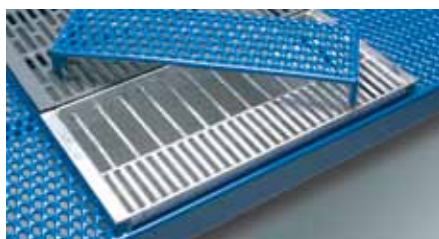
■ Manure opening 40 mm.



■ Tri-Bar manure slat with removable Tri-Bar insert.



■ Tri-Bar manure slat with removable Super Coated insert, made of expanded metal.



■ Super Coated manure slat with removable Super Coated insert, made of expanded metal.  
Alternative option: Tri-Bar insert.





## Tri-Bar sow slat

For individual housing



The **V-shaped bars** of the Nooyen steel Tri-Bar slatted floors ensure a **perfect drain of manure** and, consequently, **excellent hygiene**. This gives the flooring system an ammonia reducing effect.

Because of their flat tops, Tri-Bar slats have an **optimal standing surface** and offer **outstanding lying comfort**.

For pens housing gestation sows, an option is a self-supporting Tri-Bar floor system installed over the width above the manure channel.

Angle irons are used to install the slats on the edges of the pit. By using the centre-to-centre dimension of the pens, these angle irons fall precisely under the side fences, creating no obstacle for the sows.

The Tri-Bar floor system for individually housed sows is fitted as standard with a 120mm. tilting manure hatch positioned at the back. Another option is a complete Tri-Bar slatted floor.

In addition to the standard 600 and 800 mm width sizes, the Tri-Bar slat system for pens housing gestation sows is available in customised sizes.

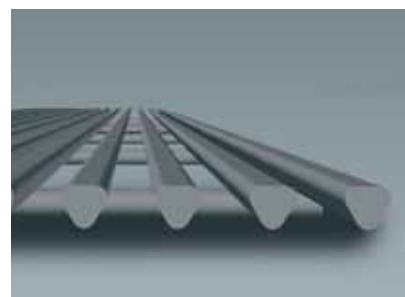
The steel Tri-Bar slatted floor for gestation pens is available with 12 or 15 mm bar widths in combination with 12 or 15 mm slots.



■ Gestation sow slatted floor with open, tilting manure hatch.



■ Positioned on the edge of the manure pit using angle irons.



■ Optimal manure drainage and hygiene thanks to the V-shaped bars with rounded edges.



# Tri-Bar sow slat

## For individual or group housing



The **V-shaped bars** of the Nooyen steel Tri-Bar slatted floors ensure a **perfect drain of manure** and, consequently, **excellent hygiene**. This gives the flooring system an ammonia reducing effect.

Because of their flat tops, Tri-Bar slats have an **optimal standing surface** and offer **outstanding lying comfort**.

Tri-Bar is available as a self-supporting construction and is easy to install in a standard position or in a combined position (parallel to the passage) with a steel support. In the standard position, self-supporting spans are possible up to 3,000 mm. Tri-Bar is available in various standard lengths – increasing per 100 mm. Different lengths are available on request. Tri-Bar slat systems can be combined perfectly with a solid concrete area.

The steel Tri-Bar slatted floor for gestation sows is available with 15 mm bar widths in combination with 12 or 15 mm slots. The optimal standard seating is 25 mm.

#### Additional option:

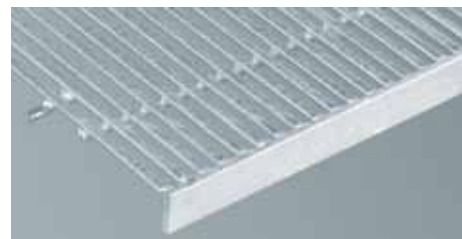
- Tri-Bar slats can be installed at any required height using strips welded against or under the Tri-Bar or angle irons.



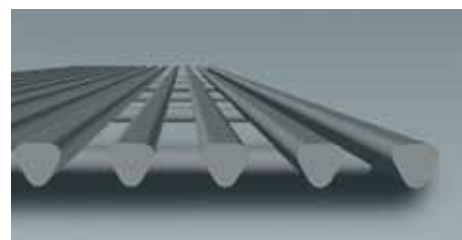
- The Tri-Bar slats for gestation sows come standard with extra profile: Softgrip



- Side pins ensure a good connection of the slatted floors.



- Tri-Bar equipped with a strip welded against the Tri-Bar.

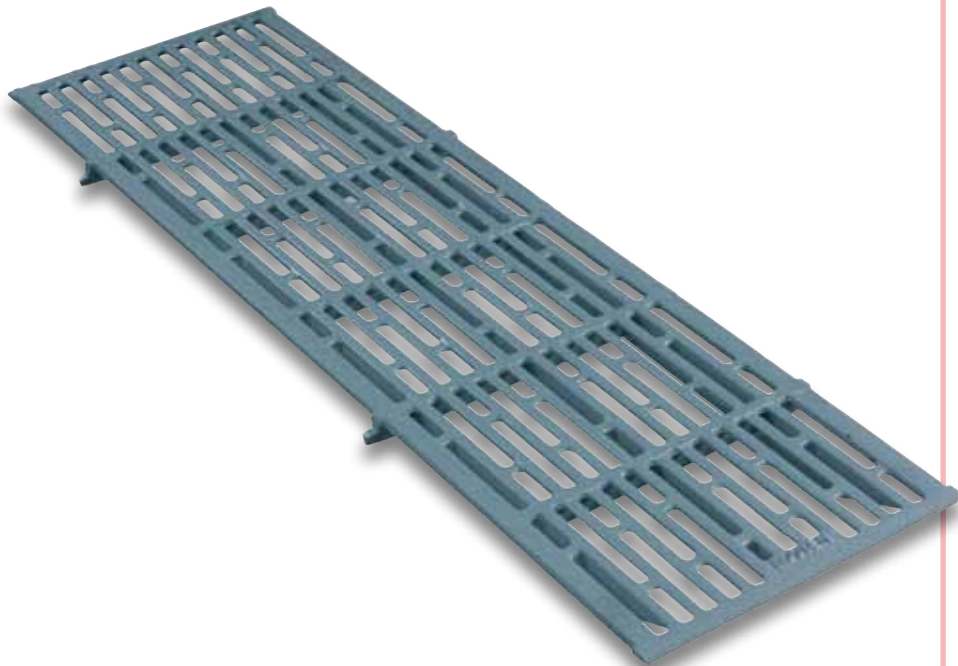


- Optimal manure drainage and hygiene thanks to the V-shaped bars with rounded edges.



# Tri-Cast sow slat

## For individual or group housing



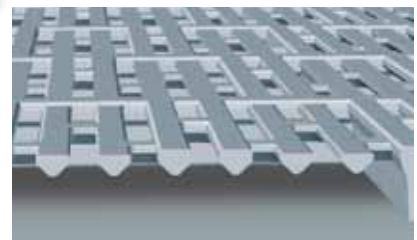
The Tri-Cast slat is a reliable cast-iron floor system for gestation sows. The slats are available in various standard lengths up to 2,000 mm, self supporting. The Tri-Cast slats are made of high-quality Australian cast-iron and are **strong, ductile** and, especially, **durable**. The V-shaped bars in the Tri-Cast slat give excellent **manure drainage** and therefore reduce ammonia. Moreover, the surface is **easy to clean**. These factors ensure **excellent hygiene**.

An alternating **high-low profile** creates a **perfect anti slip standing surface** for the sows. Tri-Cast slats offer **optimal lying comfort**.

The Tri-Cast slats for sows have 15 mm standard bar and slot widths. The slats are available in various standard lengths.

The slatted floor is **easy to install** in a standard position or a combined position (parallel to the passage) with a steel support. The optimal standard seating is 25 mm.

For deviating pit dimensions, slatted floors can be customised lengthwise and widthwise. Like Tri-Bar slatted floors, Tri-Cast slatted floor systems can be combined perfectly with solid concrete areas.



- Anti-slip standing surface thanks to alternate high-low profile and optimal manure drainage thanks to the V-shaped bars.



- Side lips ensure a good connection of the slatted floors.

# Blue Deck piglet slat

## The comfortable solid plastic slat



■ Open Blue Deck.

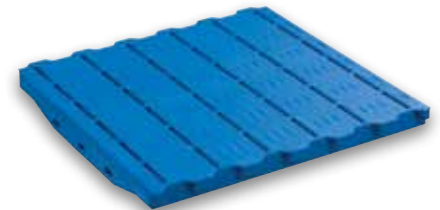
The Blue Deck slats are solid plastic slats, developed for piglets of up to 50 kilos. The **V-shape and rounded top of the bars** ensure a **perfect drain of manure** and an **easy to clean surface**. This means **optimal hygiene**. The extra elevations on the slatted floor provide **comfort** and **good grip** for the piglets. This results in a good development of the piglets' legs. The Blue Deck slats can be combined perfectly with the Tri-Bar slats to control the piglets' dunging behaviour even better.

The Blue Deck slats are **easy to install**. Steel galvanised or glass fibre strips can be used for the support. As the galvanised base strips can be equipped with a bridge construction, large self-supporting spans are possible. Another option is a height-adjustable plastic support leg.

The standard size of the slatted floor is 600 x 600 mm. If necessary, the floors can be customised lengthwise and widthwise.

### Additional options:

- The Blue Deck slatted floor is also available as a model with a 100 per cent solid area.
- The galvanised support strips can be equipped, for instance, with a wall plate, an angle iron or a round pin. This offers additional installation options.



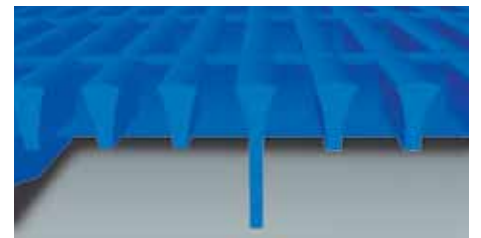
■ Blue Deck 90% solid.



■ Blue Deck 100% solid.



■ Extra elevations on the slats ensure good grip.



■ Optimal drain of manure and cleaning thanks to V-shape and rounded top of the bars.





# Tri-Bar piglet slat

The V-shaped slat for perfect hygiene



The **V-shaped bars** of the Nooyen steel Tri-Bar slatted floors ensure a **perfect drain of manure** and, consequently, **excellent hygiene**. This gives the flooring system an ammonia reducing effect.

Because of their flat tops, Tri-Bar slats have an **optimal standing surface** and offer **outstanding lying comfort**.

Tri-Bar is available as a self-supporting or non self-supporting construction and is easy to install in a standard position or in a combined position (parallel to the passage) with steel support.

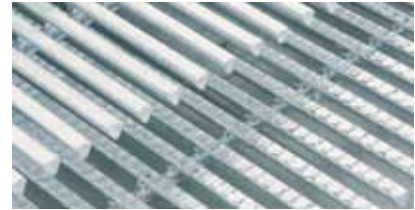
Tri-Bar is available in various standard lengths – increasing per 100 mm. Different lengths are available on request.

The Tri-Bar slatted floors can be equipped, for instance, with a heating system: the Hotpipe slatted floor or de heated convex panel slats.

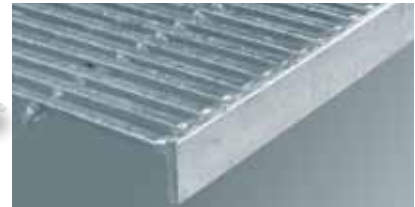
The steel Tri-Bar slats are available with 10 mm bar width in combination with 8, 10 or 12 mm slots. Another option is 12 mm bar width in combination with 10 or 12 mm slots. An alternative option for Tri-Bar is a steel round profile with 10 mm bar width in combination with a 10 mm slot.

## Additional options:

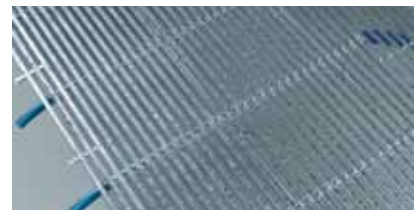
- Tri-Bar slats can be installed at any required height using strips welded against or under the Tri-Bar or angle irons.
- Tri-Bar slatted floors can be equipped with a manure opening.
- The Tri-Bar slats can be combined perfectly with Blue Deck or Super Coated slats.



- Tri-Bar is available in a flat model or a model with extra profile: Softgrip.

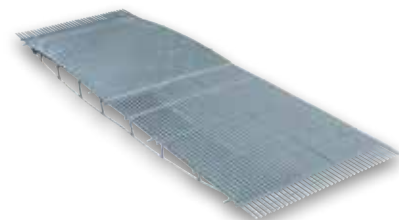


- Tri-Bar equipped with a strip welded against the Tri-Bar.



## Hotpipe slatted floor.

This self-supporting slat system is manufactured fully from Tri-Bar and is equipped with a built in hot water heating system. This system operates through pipes underneath the Tri-Bar and ensures even heating of the slatted floor.

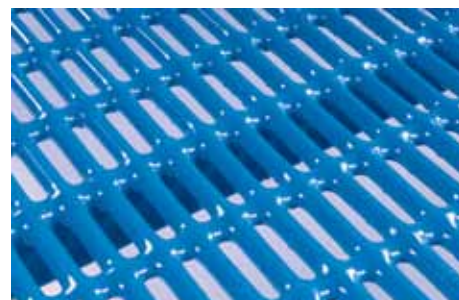
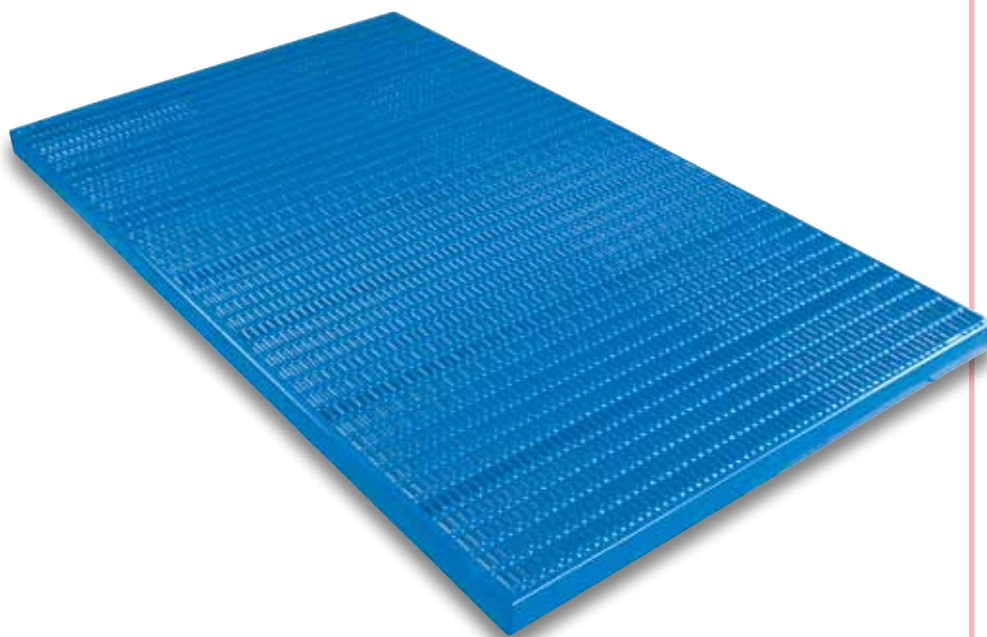


## Convex panel slats.

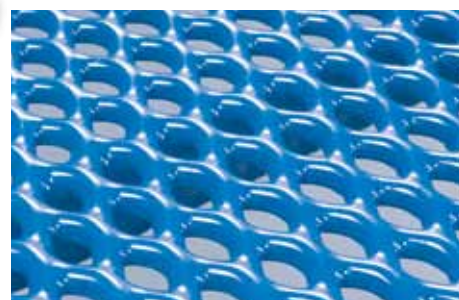
The solid convex area of this self-supporting slatted floor is heated using hot water, creating a comfortable lying area for the piglets. In addition, the convex plate is equipped with a tear shaped profile for optimal grip.

# Super Coated piglet slats

The animal-friendly, coated slat for optimal comfort



■ Super Coated woven wire.



■ Super Coated expanded metal.

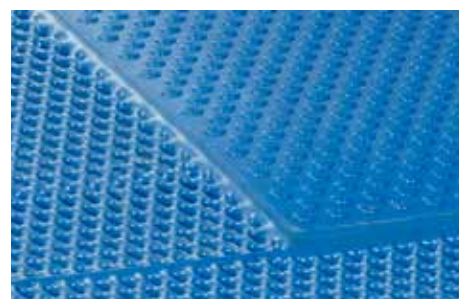
The Super Coated slatted floor for weaning is an animal-friendly floor system for piglets. The slats are made of expanded metal or woven wire, equipped with a **qualitatively excellent coating**. This coating ensures **optimal comfort** for the piglets because it feels warm and soft.

The Super Coated slats are available as a self-supporting construction. Dimensions can be produced to customer requirements.

The Super Coated slats can be combined perfectly with the Tri-Bar slats to control the piglets' dunging behaviour even better.

#### Additional options:

- Super Coated slats for weaning can be fitted with a solid area and, if necessary, with an integrated heating system.
- Super Coated slats for weaning are also available as separate coated panels that can be installed on a steel frame.

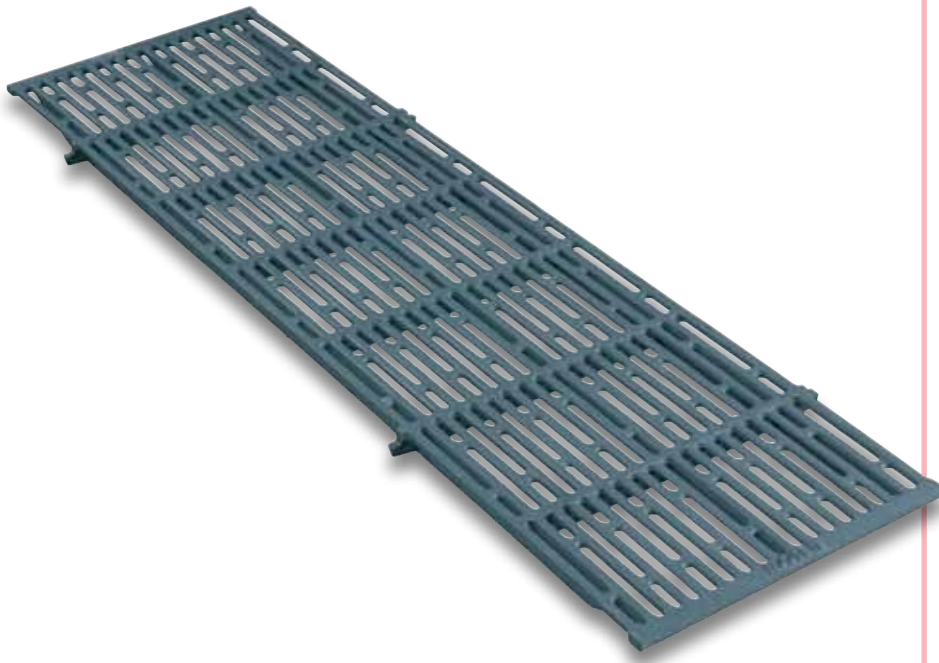


■ The Super Coated weaning piglet slat with solid area, equipped with an integrated heating system.



# Tri-Cast piglet slat

A reliable and durable cast-iron slatted floor



Tri-Cast slats are a reliable cast-iron floor system for weaning. The Tri-Cast slats are made of high-quality Australian cast-iron and are **strong, ductile** and, especially, **durable**. The V-shaped bars in the Tri-Cast slat give excellent **manure drainage** and therefore reduce ammonia. Moreover, the surface is **easy to clean**. These factors ensure **excellent hygiene**.

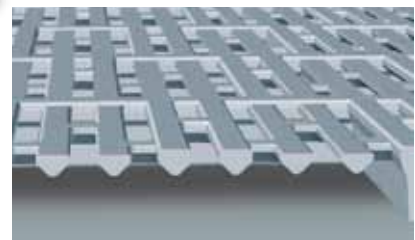
An alternating **high-low profile** creates a **perfect anti slip standing surface** for the sows. Tri-Cast slats offer **optimal lying comfort**.

Tri-Cast slats for weaning have standard 12.5 mm bar and 10 mm slot widths. The slats are available in various standard lengths up to 2,000 mm. self supporting.

The slatted floor is **easy to install** in a standard position or a combined position (parallel to the passage) with a steel support. For deviating pit dimensions, slatted floors can be customised lengthwise and widthwise.

## Additional option:

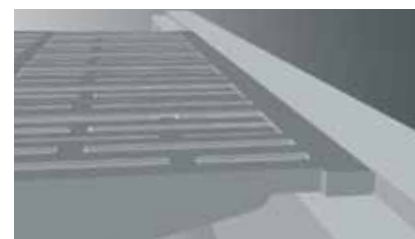
- Tri-Cast slatted floors in combi-position can be equipped with a manure opening.



- Anti-slip standing surface thanks to alternate high-low profile and optimal manure drainage thanks to the V-shaped bars.



- Side lips ensure a good connection of the slatted floors.

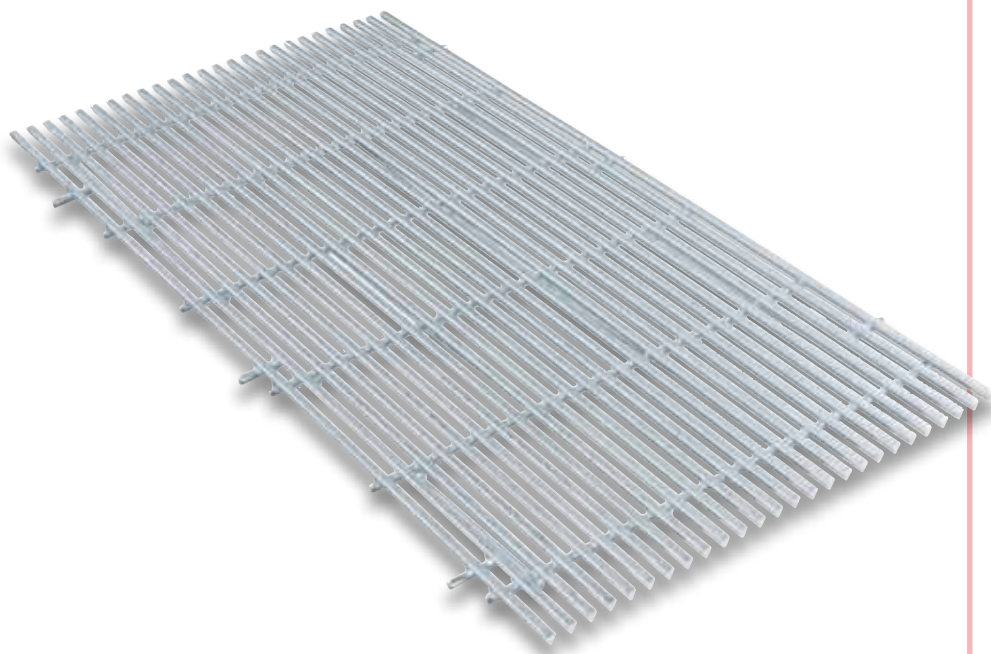


- Optimal standard seating: 25 mm.



# Tri-Bar fattener slat

The V-shaped slat for perfect hygiene



The **V-shaped bars** of the Nooyen steel Tri-Bar slatted floors ensure a **perfect drain of manure** and, consequently, **excellent hygiene**. This gives the flooring system an ammonia reducing effect.

Because of their flat tops, Tri-Bar slats have an **optimal standing surface** and offer **outstanding lying comfort**.

Tri-Bar is available as a self-supporting construction and is **easy to install** in a standard position or in a combined position (parallel to the passage) with a steel support. In the standard position, self-supporting spans are possible up to 3,000 mm. Tri-Bar is available in various standard lengths – increasing per 100 mm. Different lengths are available on request. Tri-Bar slat systems can be combined perfectly with a solid concrete area.

The steel Tri-Bar slats for fatteners are available with 12 or 15 mm bar widths in combination with 12 or 15 mm slots. The optimal standard seating is 25 mm.

### Additional options:

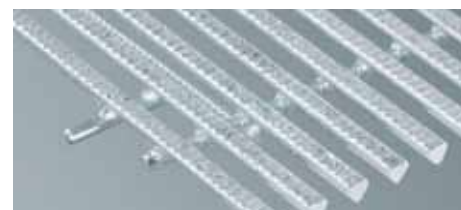
- Tri-Bar slats can be installed at any required height using strips welded against or under the Tri-Bar or angle irons.
- Tri-Bar slats for fatteners are available with a manure opening.



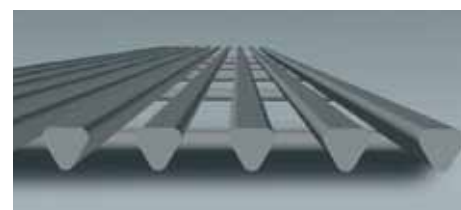
- Tri-Bar slats for fatteners come standard with an extra profile: Softgrip.



- An alternative option for Tri-Bar is a steel round profile with 12 mm bar and slot widths.



- Side pins ensure a good connection of the slatted floors.

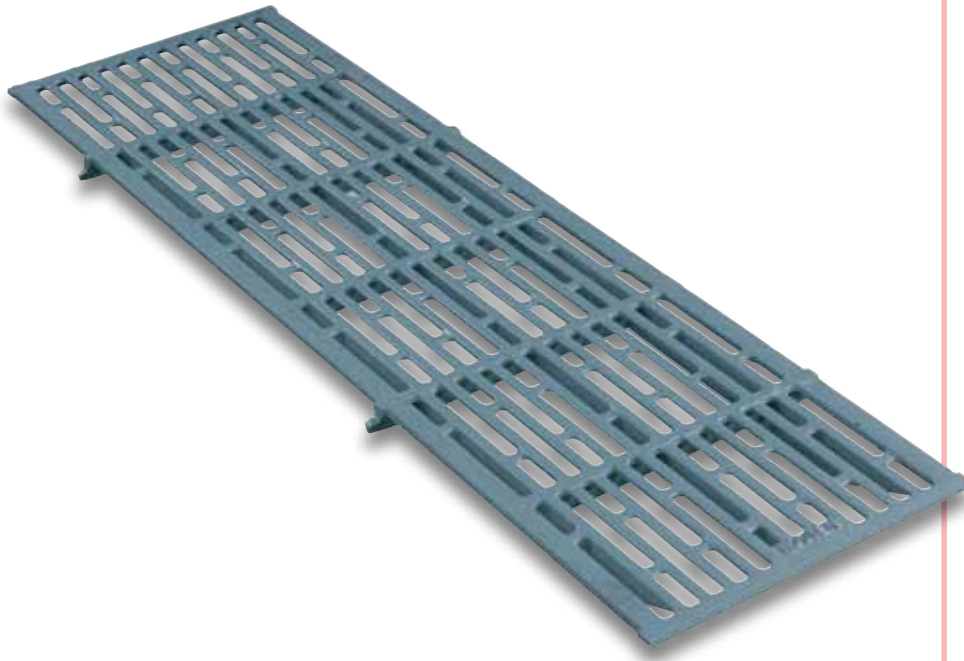


- Optimal manure drainage and hygiene thanks to the V-shaped bars with rounded edges.



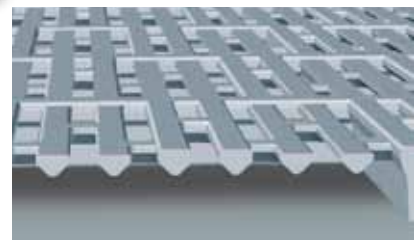
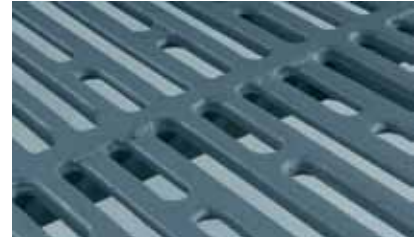
# Tri-Cast fattener slat

A reliable and durable cast-iron slatted floor

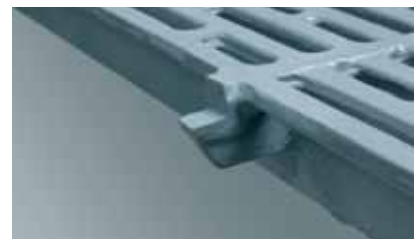


Tri-Cast slats are a reliable cast-iron floor system for fatteners. The Tri-Cast slats are made of high-quality Australian cast-iron and are **strong, ductile** and, especially, **durable**. The V-shaped bars in the Tri-Cast slat give excellent **manure drainage** and therefore reduce ammonia. Moreover, the surface is **easy to clean**. These factors ensure **excellent hygiene**. The alternating **high-low profile** creates a **perfect anti slip standing surface** for the fatteners. Tri-Cast slats offer **optimal lying comfort**.

Tri-Cast slats for fatteners have standard 15 mm bar and slot widths. The slats are available in various standard lengths up to 2,000 mm, self supporting. The slatted floor is **easy to install** in a standard position or a combined position (parallel to the passage) with a steel support. The optimal standard seating is 25 mm. For deviating pit dimensions, slatted floors can be customised lengthwise and widthwise. Like Tri-Bar slatted floors, Tri-Cast slatted floor systems can be combined perfectly with solid concrete areas.



- Anti-slip standing surface thanks to alternate high-low profile and optimal manure drainage thanks to the V-shaped bars.



- Side lips ensure a good connection of the slatted floors.

# Nooyen Pig Flooring

## Quality guaranteed

Quality is a number one priority with Nooyen. Many years of experience in the field of slatted floor systems enables Nooyen to continually improve its product range. This is an important condition to be able to optimally anticipate the requirements of pig farmers and further consolidate the market position.

In addition to quality, Nooyen naturally attaches great value to sharp price levels. This is partly achieved by a great extent of standardisation of products and dimensions. Additionally, custom-made equipment naturally remains an important spearhead.

### Super Coated

Prior to and during the coating process, various quality inspections are conducted in order to guarantee optimal quality and a long life span of the coated slats. For instance, the pH-value of the primer is measured and the viscosity – or the degree of fluidity – of the coating is determined.

A coating hardness tester is used to determine the hardness of the coating. This measurement is conducted before treating the slatted floor with a salt solution. Finally, testing samples are used to carry out a mechanical tensile test. Via this test, the flexibility of the coating is tested. After the tensile test, the sample is checked using a microscope, so that optimal adhesion of the coating to the steel can be guaranteed.

### Tri-Bar

Nooyen aims for a long, durable life of its Tri-Bar slatted floor by using high resistant steel instead of standard reinforcing steel (FeB 500). High resistant steel is a high quality alloy with a high nickel, chromium and copper content and a highly specific amount of silicon. Compared with standard reinforcing steel, high resistant steel has a highly accurate and therefore consistent composition. The steel is cold formed and thermally galvanised. The zinc coating has an average thickness of 100 to 130 micron. As high resistant steel can be coated with more zinc than standard reinforcing steel, it has a longer life. Thanks to the use of high resistant steel, the quality of the slatted floors marketed by Nooyen far exceeds NEN-EN-ISO 1461 standards.

### Tri-Cast

Nooyen Tri-Cast slats are made of a qualitatively excellent casting mixture: Ductile casting (EN-GJS-400-15). Thanks to the lamellar structure of the iron molecules and the high viscosity of this mixture, the material is impact-resistant and highly ductile. This means that Tri-Cast can withstand a 5 percent bend without any problems.

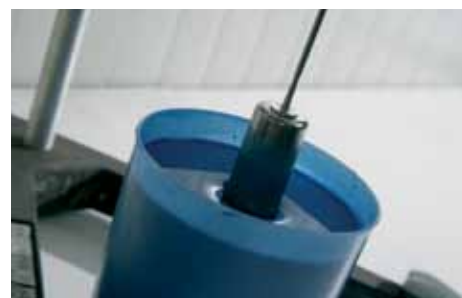
### Blue Deck

The Blue Deck slats are made of environmentally-friendly and recyclable first-generation cadmium-free polypropylene. Polypropylene is a thermoplastic polymer with a very wide range of applications. This material group consists of linear macromolecules without cross links. The application of thermoplasts has big advantages because softened materials can easily be formed into the required shape and can also easily be reused. Blue Deck slatted floors are also highly resistant to chemical solutions, bases and acids.

### Coating process quality inspections



■ Primer pH-value measurement.



■ Viscosity measurement.



■ Mechanical tensile test.



■ Check of samples.





Every day Nooyen engages in a process of designing and producing slatted floor systems that suit your farm, and help you achieve the very best results. These systems are aimed at continually improving the technical results on your pig farm. You can always expect the very latest, innovative solutions from Nooyen.

**Nooyen offers the most comprehensive range of slatted floor systems.**

**Our central focus is the farmer.  
We are making your next floor!**

Nooyen offers paralleled flexibility when it comes to designing and manufacturing a system that suits your wishes and ideas. Nooyen works with expert dealers who can offer you extensive advice and help you make the right choices. You can also expect outstanding service levels and advice from your dealer. Before, during and after your purchase.

# Interested?

## Make an appointment

Call, free of obligation, +31 (0)493 31 68 60 or send an e-mail to [sales@nooyen.com](mailto:sales@nooyen.com). We provide expert advice and information, with no obligation!

## Visit our website too!

[www.nooyen.com](http://www.nooyen.com)





Nooyen Pig Flooring  
Vuurijzer 15  
NL 5753 SV Deurne  
T +31 (0)493 31 68 60  
F +31 (0)493 31 10 07  
E [sales@nooyen.com](mailto:sales@nooyen.com)

| [www.nooyen.com](http://www.nooyen.com)

For more information about the different Nooyen slat systems, visit [www.nooyen.com](http://www.nooyen.com) or contact Nooyen, free of obligation.  
Nooyen Pig Flooring is a trade name of Nooyen Manufacturing B.V.